

Your RecoveryRx Breast Surgery Kit Contains:

Two 12cm RecoveryRx Loop

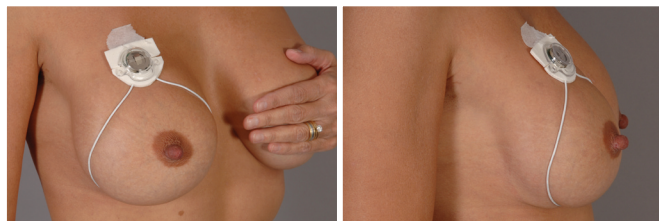
STEP 1: Turn RecoveryRx On

Hold the white foam portion of the RecoveryRx loop and gently pull and remove the clear tab. Remove the white plastic tab DO NOT discard the tab, it can be reinserted to turn off the RecoveryRx loop when not in use. A faint red light confirms the RecoveryRx device is activated.

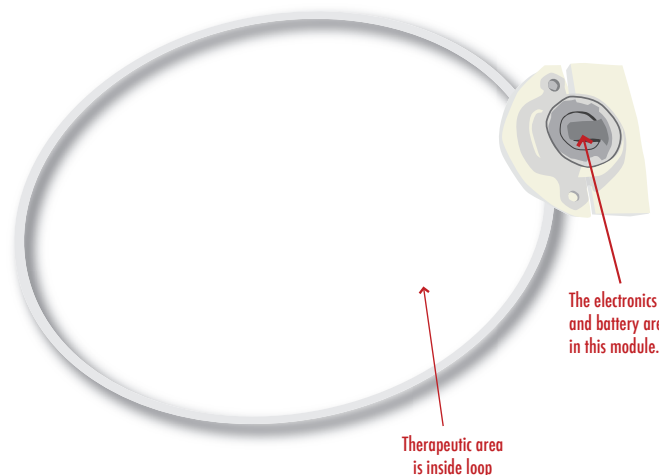
In the operating room place the loop over each breast, smooth side down. The treatment area is within the loop. Use medical grade tape to secure the loop in place.

FOR BEST RESULTS

Apply the RecoveryRx immediately after surgery or injury. Wear continuously, a minimum of 6 hours, until pain and swelling are gone. RecoveryRx is safe to use 24 hours per day and will deliver an estimated 30 days of treatment.



Images above show where to place RecoveryRx loops



Your RecoveryRx Breast Surgery Kit Contains:

Two 12cm RecoveryRx Loop

STEP 1: Turn RecoveryRx On

Hold the white foam portion of the RecoveryRx loop and gently pull and remove the clear tab. Remove the white plastic tab DO NOT discard the tab, it can be reinserted to turn off the RecoveryRx loop when not in use. A faint red light confirms the RecoveryRx device is activated.

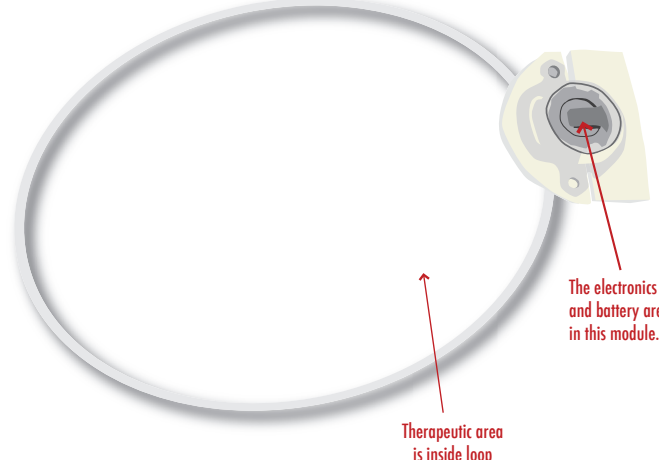
In the operating room place the loop over each breast, smooth side down. The treatment area is within the loop. Use medical grade tape to secure the loop in place.

FOR BEST RESULTS

Apply the RecoveryRx immediately after surgery or injury. Wear continuously, a minimum of 6 hours, until pain and swelling are gone. RecoveryRx is safe to use 24 hours per day and will deliver an estimated 30 days of treatment.



Images above show where to place RecoveryRx loops



FREQUENTLY ASKED QUESTIONS

What is RecoveryRx? RecoveryRx is a miniaturized medical device that delivers continuous electromagnetic therapy to restore damaged cells. Applied post-surgically or to an injury, RecoveryRx quickly relieves edema, inflammation and pain, providing patient comfort while reducing bruising and speeding up the onset of natural healing.

How does RecoveryRx work? Tissue cells are tiny, electrically charged machines. When traumatized by surgery or injury cell's electrical charge is diminished, which causes normal cell functions and operations to shut down. Chemical signals that cause inflammation are released, resulting in pain and inhibiting the cell communication necessary for healing to begin. RecoveryRx induces a mild electrical current into damaged cells at frequency which recharges the cell, stops the release of pain and inflammatory mediators, increases blood flow and re-establishes normal cell interaction. As a result, your body can begin to heal faster and you experience less swelling, pain and bruising.

Is RecoveryRx Safe? RecoveryRx is extremely safe and comfortable to wear. The low level current that is gently pulsed into damaged tissue is not discernible, even though the device is continuously working to help you heal.

FREQUENTLY ASKED QUESTIONS

What is RecoveryRx? RecoveryRx is a miniaturized medical device that delivers continuous electromagnetic therapy to restore damaged cells. Applied post-surgically or to an injury, RecoveryRx quickly relieves edema, inflammation and pain, providing patient comfort while reducing bruising and speeding up the onset of natural healing.

How does RecoveryRx work? Tissue cells are tiny, electrically charged machines. When traumatized by surgery or injury cell's electrical charge is diminished, which causes normal cell functions and operations to shut down. Chemical signals that cause inflammation are released, resulting in pain and inhibiting the cell communication necessary for healing to begin. RecoveryRx induces a mild electrical current into damaged cells at frequency which recharges the cell, stops the release of pain and inflammatory mediators, increases blood flow and re-establishes normal cell interaction. As a result, your body can begin to heal faster and you experience less swelling, pain and bruising.

Is RecoveryRx Safe? RecoveryRx is extremely safe and comfortable to wear. The low level current that is gently pulsed into damaged tissue is not discernible, even though the device is continuously working to help you heal.

WARNINGS

RecoveryRx should not be used on persons with a cardiac pacemaker, cardioverter defibrillator, neurostimulator or any active medical or metallic implant that is within the area of application.

RecoveryRx should not be used by women that are pregnant or think they may be pregnant.

RecoveryRx should not be used by skeletally immature persons.

RecoveryRx is not a sterile device. If using over an open wound, place the RecoveryRx over sterile gauze.

Discontinue use if rash or skin irritation results. Consult a qualified health care practitioner before using RecoveryRx again.

Do not stand, walk, or put body weight on RecoveryRx as this may damage the circuitry.

RecoveryRx can be disposed of in a normal trash container.

RecoveryRx will not interfere with other electronic equipment in use.

Always consult a qualified health care practitioner to evaluate your condition or injury prior to using RecoveryRx. If pain or swelling persist or worsen, discontinue use and seek medical attention immediately.

WARNINGS

RecoveryRx should not be used on persons with a cardiac pacemaker, cardioverter defibrillator, neurostimulator or any active medical or metallic implant that is within the area of application.

RecoveryRx should not be used by women that are pregnant or think they may be pregnant.

RecoveryRx should not be used by skeletally immature persons.

RecoveryRx is not a sterile device. If using over an open wound, place the RecoveryRx over sterile gauze.

Discontinue use if rash or skin irritation results. Consult a qualified health care practitioner before using RecoveryRx again.

Do not stand, walk, or put body weight on RecoveryRx as this may damage the circuitry.

RecoveryRx can be disposed of in a normal trash container.

RecoveryRx will not interfere with other electronic equipment in use.

Always consult a qualified health care practitioner to evaluate your condition or injury prior to using RecoveryRx. If pain or swelling persist or worsen, discontinue use and seek medical attention immediately.

U.S. & Foreign Patents Pending
Safe for Diabetics, Arthritics,
Elderly, the Bed Ridden and on Open Wounds



1-866-757-2284
Manufactured by:
BioElectronics Corporation
4539 Metropolitan Court
Frederick, MD 21704
Stock symbol: BIEL
www.BioElectronicsCorp.com



DFU-RXBRKCR-0001.2

U.S. & Foreign Patents Pending
Safe for Diabetics, Arthritics,
Elderly, the Bed Ridden and on Open Wounds



1-866-757-2284
Manufactured by:
BioElectronics Corporation
4539 Metropolitan Court
Frederick, MD 21704
Stock symbol: BIEL
www.BioElectronicsCorp.com



DFU-RXBRKCR-0001.2

